



MONTHLY MEMBERSHIP PROGRESS REPORT

District 16 L

Results as of: 06/30/2018

GMT: MAHESH CHITNIS

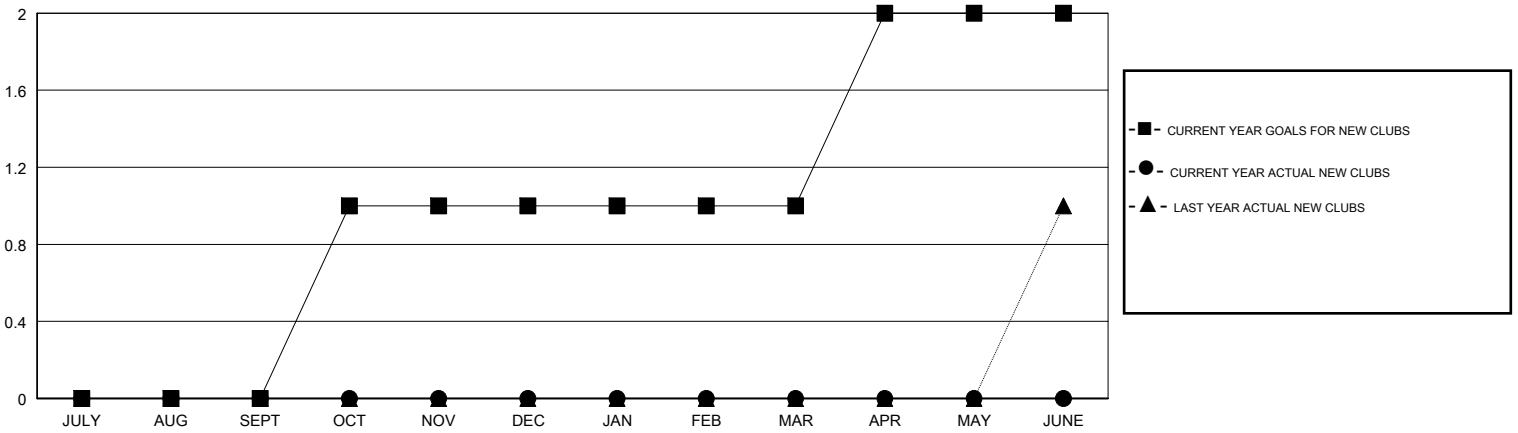
LOCATION NEW JERSEY

GMT CA

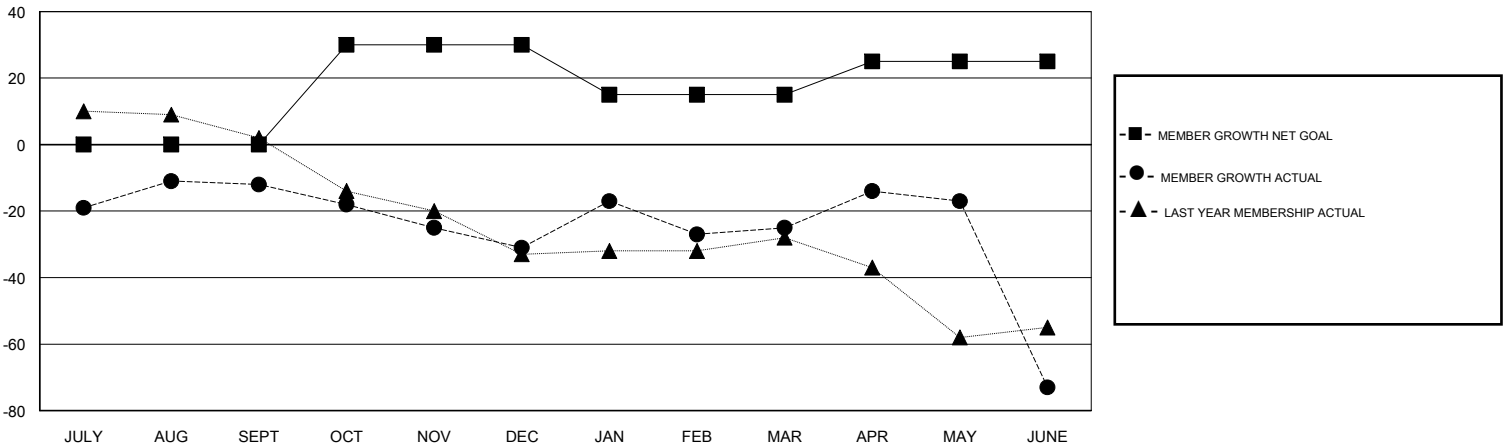
Clubs			
RESULTS FOR 2017-2018			
QUARTER	NEW CLUB GOAL	NEW CLUBS	DROPPED CLUBS
JULY/AUG/SEPT	0	0	0
OCT/NOV/DEC	1	0	0
JAN/FEB/MAR	0	0	0
APR/MAY/JUNE	1	0	0

Members			
RESULTS FOR 2017-2018			
QUARTER	MEMBER GROWTH NET GOAL	MEMBER GROWTH ACTUAL	DROPPED MEMBERS ACTUAL (including transfers)
JULY/AUG/SEPT	0	47	48
OCT/NOV/DEC	30	26	44
JAN/FEB/MAR	-15	45	37
APR/MAY/JUNE	10	59	104

GOALS AND ACTUAL NEW CLUBS CUMULATIVE



GOALS AND ACTUAL MEMBERS CUMULATIVE



DROPPED CLUBS: 0	35 CLUBS OF 66 ADDED 1 OR MORE NEW MEMBERS	<u>GENDER DISTRIBUTION</u>	
DROPPED MEMBERS		MALE	1,116 (69.53%)
DECEASED	23	FEMALE	489 (30.47%)
CLUB CANCELLED	0	Women Percentage Fiscal Year Goal: 29%	
OTHER	210	TOTAL FAMILY UNIT MEMBERS	0
TOTAL	233	FAMILY MEMBERS PAYING HALF DUES	0

[CLICK HERE FOR CUMULATIVE MEMBERSHIP DATA](#)